

FORTACO

FORTACO DEFENSE



FULL-SYSTEMS EXPERTISE

Fortaco offers technology and manufacturing services for the land-segment defense clients. We develop complex, high-tech solutions and apply full-system expertise gained in the private sector to meet the rigorous defense-sector requirements for safety, quality, supply management, and security compliance.

We operate dedicated production lines for defense products, supported by restricted shop-floor access and strict visitor vetting to ensure full security and confidentiality.

Fortaco operates at several business sites within the European Union and supports industrial cooperation requirements for international defense programs. Our defense products are deployed by OEM customers globally.

BROAD PRODUCT PORTFOLIO

Fortaco serves a broad portfolio of product categories for the defense sector.

Focusing on land-based defense end products, we deliver customized engineering solutions and high-performance products to OEM customers worldwide.

As a leading partner in the defense segment, Fortaco delivers steel fabricated components, complex assemblies, and premium vehicle cabins. Our solutions are engineered to perform in the most demanding environments.

Skilled workforce is our key asset and the driving force behind the quality and reliability trusted by our global customers.

TECHNOLOGY AND R&D

Fortaco's Defense team supports customers at every stage of product development and new product introduction. We bring expertise in concept design, engineering solutions, industrialization, and tailored manufacturing. Quality and compliance are ensured through structured management systems that are fully auditable and certified to relevant ISO standards.

We offer system integration by combining hardware, control systems, and subsystems into one unified solution. This reduces R&D complexity on the customer side and accelerates the development of mission-ready products.

Our commitments

SAFETY | QUALITY | DELIVERY ACCURACY

348+

Net sales MEUR

2500+

Employees

80+

Welding robots

60.000+

Tons of steel annually

50+

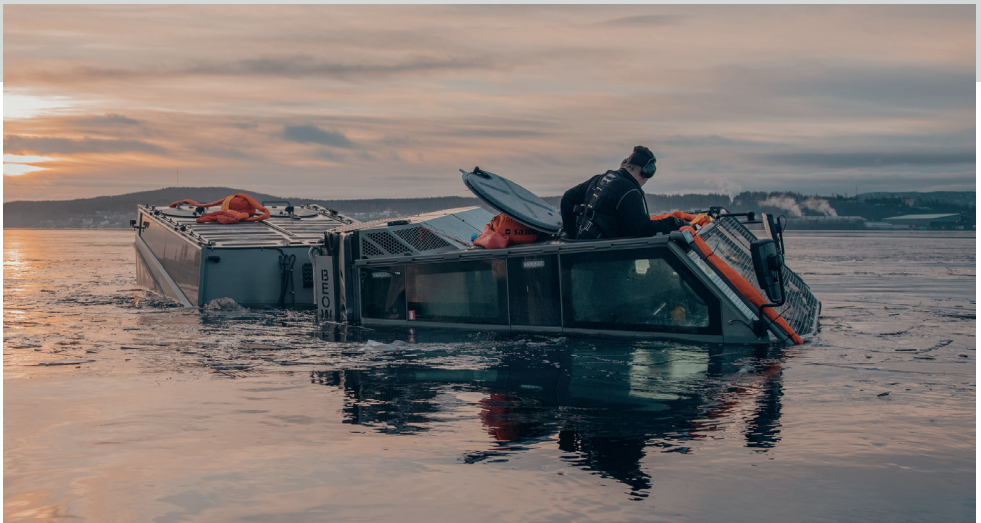
CNC centres

Our rugged design philosophy is built on several years of experience. Solutions are engineered for heavy duty applications ensuring:

- shock and vibration resistance for high-impact operations and mechanical stress
- water and dust protection – even amphibious capability
- reliable performance in extreme heat or cold
- corrosion-resistant materials and coatings that withstand chemical damage.

Integrated Logistics Systems (ILS) approach ensures that every defense product is supported throughout its entire lifecycle. We engineer not only for performance, but also for:

- reduced lifecycle costs
- improved system readiness and availability
- high maintainability and reliability
- early integration of logistics into system design



CUSTOMIZED OFFERINGS

Fortaco combines manufacturing excellence, engineering know-how and system technology. We ensure assignment readiness and compliance with military standards.

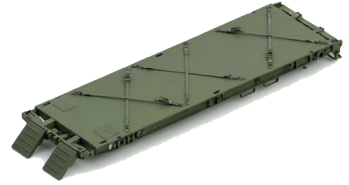
Since entering the defense sector, Fortaco has expanded its scope of items to a wide range of solutions, including cabins, steel fabricated components, and complex assemblies.

Cabins: Fortaco offers the whole integrated solution, combining cabin hardware and customer-specific applications, including control systems.

Steel Fabrications: We produce complete small and large welded steel structures, chassis, frames, and bodies.

Module Assemblies: We provide a dedicated production area for the manufacturing of suspension frames, including welding, painting, and the module assembly of brake systems, gearbox and wheel hubs for the suspension frame.

Vehicle Assemblies: Full vehicle assemblies and assembled systems are also included in our defense offerings.



WHY FORTACO?

Fortaco serves defense customers from its own European manufacturing footprint.

By uniting engineering and manufacturing under one roof, we simplify product development, reduce costs, and accelerate time-to-market.

Our engineering expertise and state-of-the-art technology enable us to deliver steel fabrications that meet the highest standards of durability and performance.

We design and manufacture solutions for heavy-duty applications. Whether you require 100, 1,000, or 10,000 cabins, we deliver tailored and scalable solutions.

Our flexible assembly offering includes complete vehicle assemblies, module assemblies, cabin assemblies and integrated systems.

Customers gain the assurance of controlled processes, traceability, and quality.

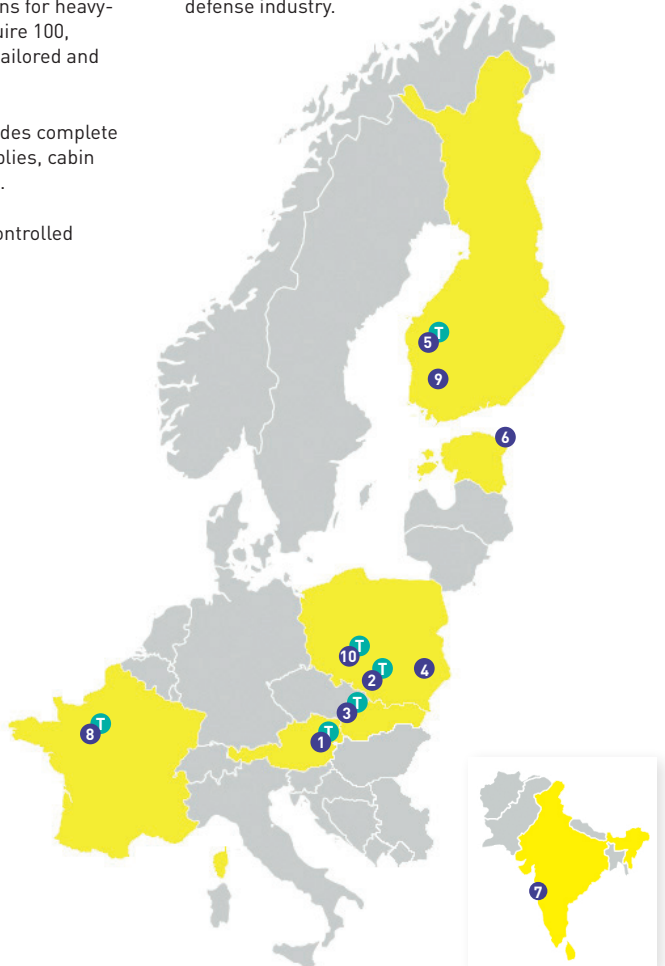
Business Sites

- T Technology Hub
- 1 Breitenau, Austria**
Cabins
- 2 Gliwice, Poland**
Steel Fabrications
- 3 Holič, Slovakia**
Cabins
- 4 Janów Lubelski, Poland**
Steel Fabrications
- 5 Kurikka, Finland**
Assemblies, Cabins
- 6 Narva, Estonia**
Steel Fabrications
- 7 Pune, India**
Cabins
In partnership with Tata Autocomp
- 8 Sablé France**
Cabins
- 9 Sastamala, Finland**
Assemblies
- 10 Wrocław, Poland**
Assemblies, Steel Fabrications

NATO AQAP 2110

Fortaco's Business Site Kurikka meets the requirements of the NATO AQAP-2110 certification, NATO's quality standard for suppliers in the defense sector. This certification is awarded when processes, products, and quality meet international requirements for military use.

With AQAP-2110, Fortaco strengthens its position as a reliable first-choice partner for demanding projects in the defense segment. Our continuous commitment to safety, quality and operational excellence further reinforces our role as a trusted partner in the defense industry.



THE BEOWULF STORY FROM DESIGN TO PRODUCT

Beowulf is an articulated, dual-body amphibious vehicle built on well-proven technology and designed to deliver total operational support where other vehicles cannot. The vehicle is an integrated solution, combining cabin hardware, control systems and mission-specific applications. Both the front and rear cabins are engineered and manufactured by the Fortaco Defense team.

The story began in 2011, when BAE Systems Hägglunds approached Fortaco (Ruukki at that time) with the idea of updating the Bv206 – a trusted and reliable all terrain vehicle, with more than 12,000 units sold worldwide during the 1980s and 1990s – to meet modern requirements.

The original concept was to develop a new tracked all terrain vehicle based on BAE Systems Hägglunds' BvS10 powerline and track system, which already had a proven track record and well established technology.

This would be combined with comfortable and ergonomic cabins developed by Fortaco. The goal was to significantly improve comfort and ergonomics for both the operator and the crew. The plan was to use commercially available civilian spec components wherever possible. Fortaco's scope also included the development of a new, fully digitized vehicle control system. Several concepts were developed and presented to the customer between 2011 and 2014, until the first actual prototype development began.

Prototype development started in September 2014, and the very first prototype cabin was delivered in May 2015. The Beowulf vehicle was introduced at the DSEI exhibition in September 2015. Initial purpose was to develop a drivable moving prototype; however, it proved so successful that it was used to showcase the new vehicle generation and participated in multiple shows and demonstrations.





The next phase began with the first end-customer prototype order in 2018. The end-customer ordered two prototypes for a winter field-testing competition, where products from two suppliers were thoroughly tested and evaluated under harsh winter conditions in 2020. At this stage, significant design changes were made to the vehicle, including adjustments to the main dimensions. Following the evaluation, the end-customer selected Beowulf as its future platform. Reliability, durability, and good ergonomics were the key factors behind Beowulf's success.

Further modifications were made to the vehicle design to meet a wide range of military requirements and to prepare the product for industrialization. The first cabins for serial-production vehicles were

delivered in May 2023, and serial production has been running ever since. The Beowulf platform has also been selected for additional end-customer programs.

The front and rear cabins are tailor-made according to customer requirements. Fortaco is responsible for meeting the stringent performance requirements in extreme weather conditions, ensuring mobility in water, complying with air-transport regulations, and fulfilling many other specifications. The cabins are manufactured and assembled at the Kurikka Business Site in Finland.

We operate dedicated manufacturing facilities – from welding to final assembly – specifically for this product due to special security requirements.



Fortaco is the leading full-solution provider for OEMs in the off-highway equipment industries. Pioneering the design and production of assemblies, cabins, steel fabrications, we offer cutting-edge technology for enhanced productivity. We empower off-highway machines to use low-emission steel and our customers to optimize their operations and move towards a greener future.

Collaborating with industry-leading OEMs, we specialize in full lifecycle solutions from research and technology to the design and production of components and machines. Fortaco's innovative technologies extend to lightweight design, ensuring efficiency without compromising on durability and functionality.

We have operations in multiple business sites which enable flexible and reliable support for our customers.

Professional people are our asset. We develop our people and leaders based on the Fortaco Values of respect, simplicity and speed.